

COOPER

Cooper Bearings Group

Cooper Roller Bearings Co Ltd
Wisbech Road
King's Lynn
Norfolk PE30 5JX
England.
Telephone +44 (0) 1553 763 447
Fax +44 (0) 1553 761 113

Cooper Geteilte Rollenlager GmbH
Postfach 100 423
Oberbenrader Str 407
47704 Krefeld
Germany.
Telephone + (49) 2151 713 016
Fax +(49) 2151 713 010

The Cooper Split Roller Bearing Corp
5795 Thurston Avenue
Virginia Beach, VA 23455 - 3378
USA.
Telephone 757 460 0925
Fax 757 464 3067
www.CooperBearings.com

Authorised Cooper Distributors Worldwide

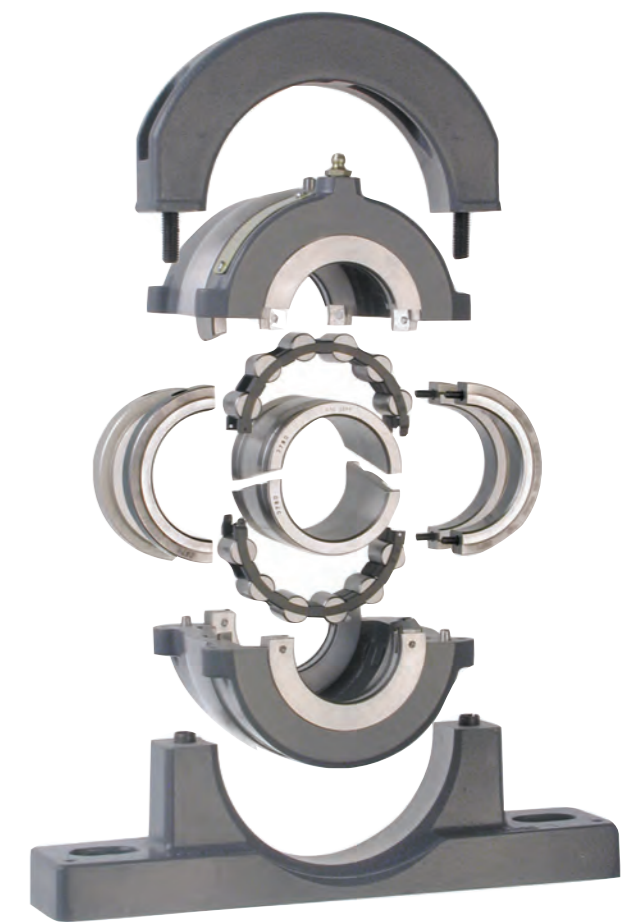
Issue January 2003

RudUKIkvl

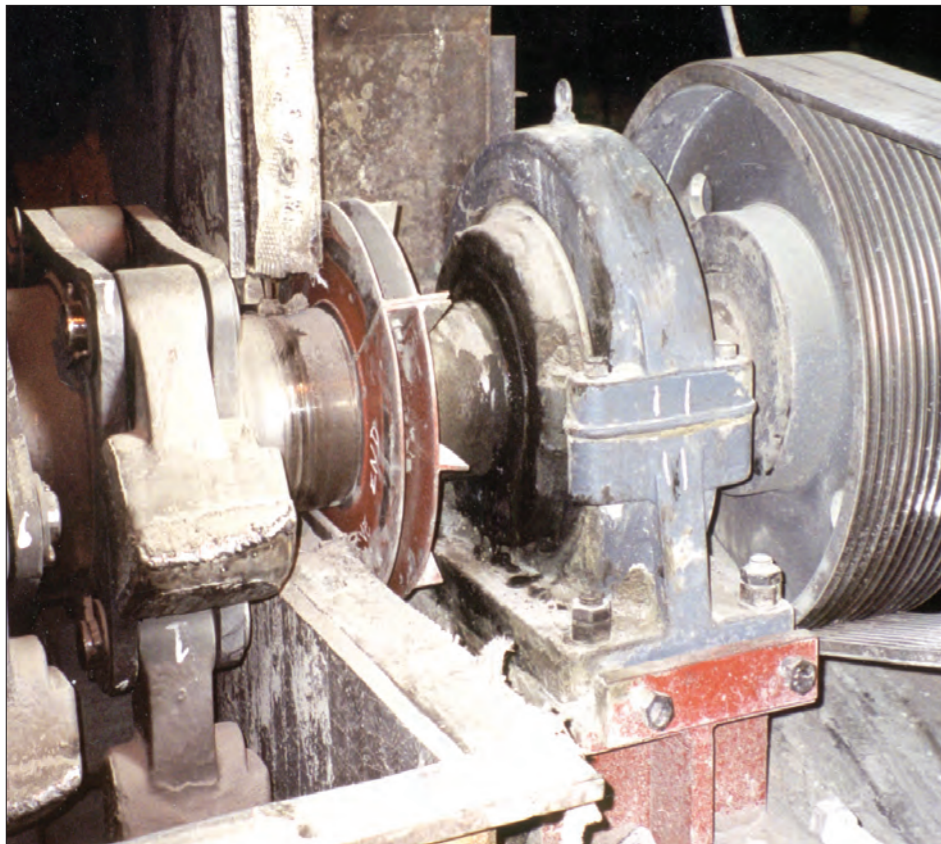


BS EN ISO 9001:1994

COOPER



Proven Cost Saving Bearings



Proven Return on Investment

In the case of one long term Cooper customer: a heavy duty clinker breaker application in the cement industry utilising solid bearings was undergoing bearing replacement every six months, each changeout took 32 man hours with the downtime at 16 hours. Production loss was quoted at £7,500 per hour, this alone totalled a production loss cost to the customer of £120,000 per bearing changeout. The total cost per year for this customer was £250,950.

The bearings were then replaced with Cooper 03 BCP 180mm GR bearings and installation time plummeted to four hours. Production time increased and production loss costs reduced to £15,000. The result was an instant saving of £107,240.

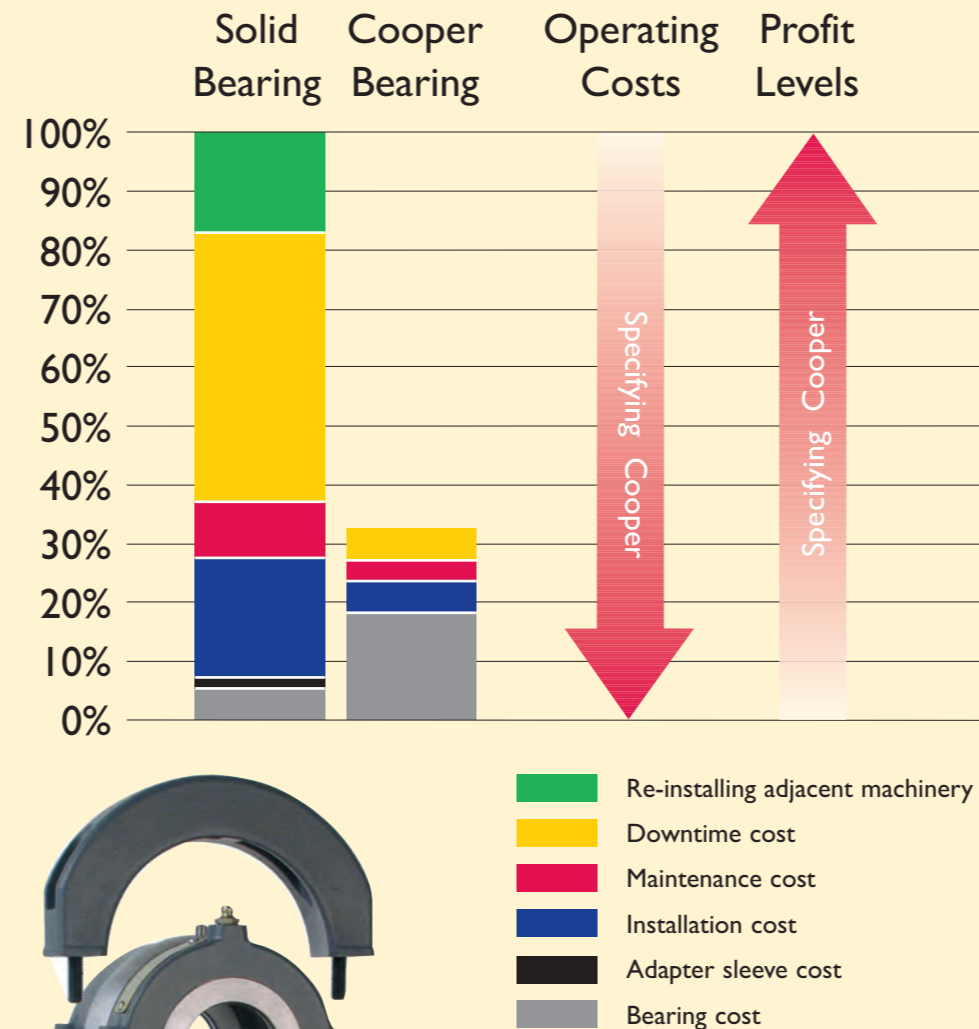
On Going Long Term Benefits

In four years, the original Cooper bearing has not been changed. This is due to the customers' preventative maintenance programme, ease of inspection combined with the superior concentric sealing and the quality of the the Cooper product.

At the time these costs were compiled, this customer was saving nearly £250,000 per machine per year. The level of saving increases on a monthly basis, proving that even in the toughest operating conditions, a Cooper split roller bearing is a guaranteed return on investment.

The top photograph shows the clinker breaker with guards removed for photographic purposes and the right hand picture illustrates a typical trapped

Solid Bearing Versus Cooper Split Bearing Costs



Evaluate Your Own Cost Saving Potential Using Cooper Bearings

COST SAVING COMPARISON

Typical example shown in blue	Current Bearing	Cooper Bearing
1 Cost of bearing	£1,795	£3,175
2 Estimated time of bearing change	16 hours	2 hours
3 Number of people to replace bearing	2	2
4 Maintenance cost per person, per hour	£15	£15
5 Production loss cost per hour	£7,500	£7,500
6 Crane rental per hour (average cost)	£200	N/A

TO FIND THE COST SAVINGS:

A Labour cost for Outage (Line 2 x line 3 x line 4)	£480	£60
B Production loss for Outage (Line 5 x line 2)	£120,000	£15,000
C Labour cost plus Production loss (Line A plus line B)	£120,480	£15,060
D Equipment rental for Outage (Line 6 x line 2)	£3,200	N/A
E Bearing + Labour + Production loss + Crane rental cost (Line 1 plus line C plus line D)	£125,475 (per 6 months)	£18,235
COMPARISON DIFFERENCE	£250,950	£18,235
ANNUAL TOTAL SAVINGS	-	£232,715

Subtract the value of line E on the left from the value of line E on the right to establish the savings achieved by specifying Cooper

application, in this instance, a steel works cooling bank. The accessibility benefits and the cost saving potential of the Cooper 'Totally split to the shaft' bearing can be readily appreciated from these photographs.

The full cost saving potential of the Cooper bearing can be explained by our local Regional Sales Manager who will also offer free professional advice backed by solid technical support. Standard product is readily available

from our distribution partners around the world.

For a complete list of our distribution partners, please visit us at CooperBearings.com

Contact Cooper or authorised distributors for more information.



A Supplier of Competitive Advantage